

Connecting to the HWS Wireless Network Mac OS 10.5

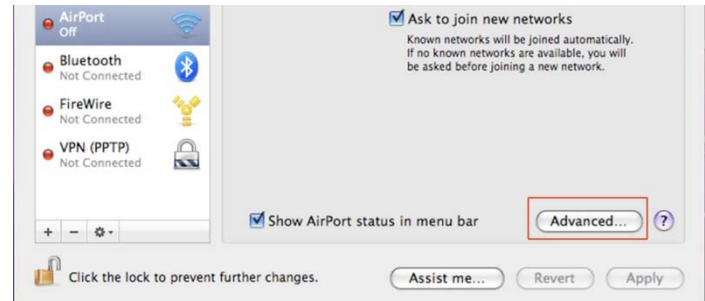
8/26/2009

To connect to the HWS wireless network:

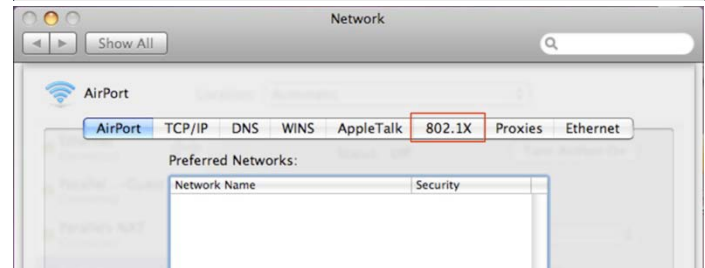
1. In the upper right of your screen, click **Airport > Open Network Preferences**



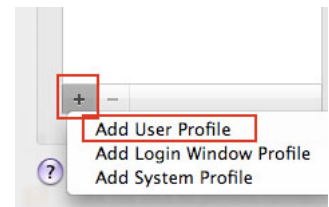
2. In the lower right corner click **Advanced**



3. Click the **802.1x** tab



4. On the bottom left of the box click the **plus sign (+)** and choose to add a **User Profile**

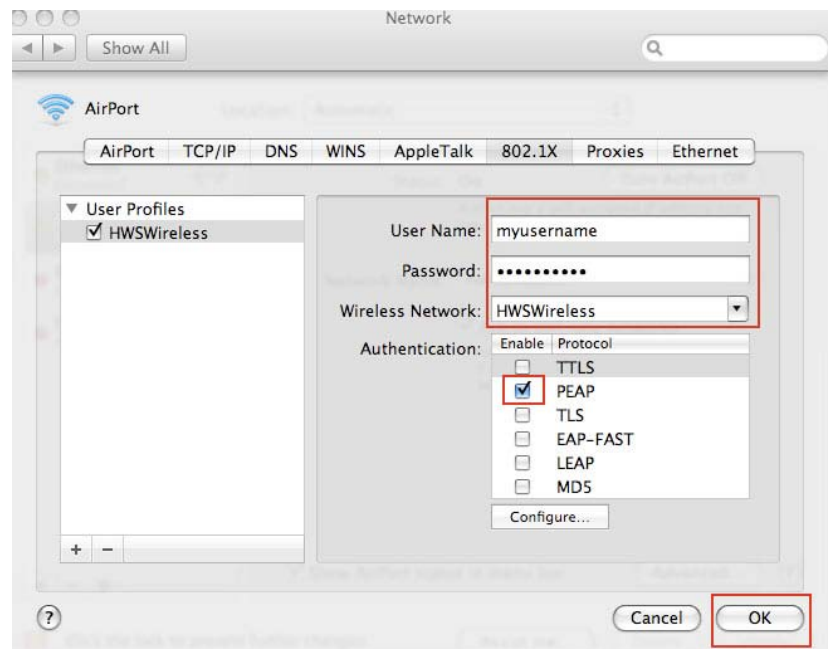


5. At the flashing cursor, name the configuration **HWSWireless**

6. Enter your HWS **User Name** and **Password**

7. From the dropdown, select **HWSWireless**

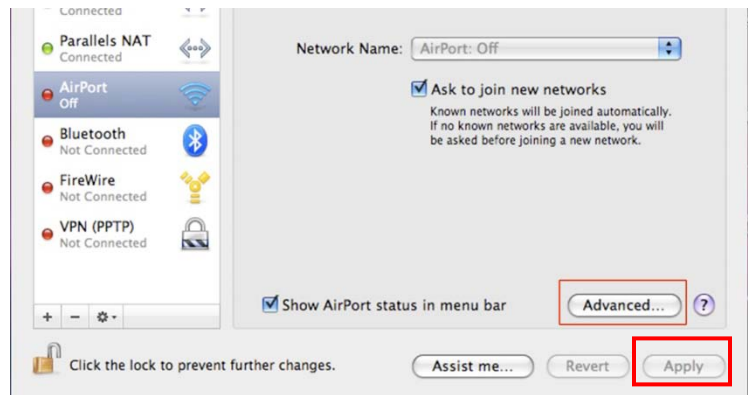
8. Under Authentication, uncheck all items except for **PEAP** then click **OK**



Connecting to the HWS Wireless Network Mac OS 10.5

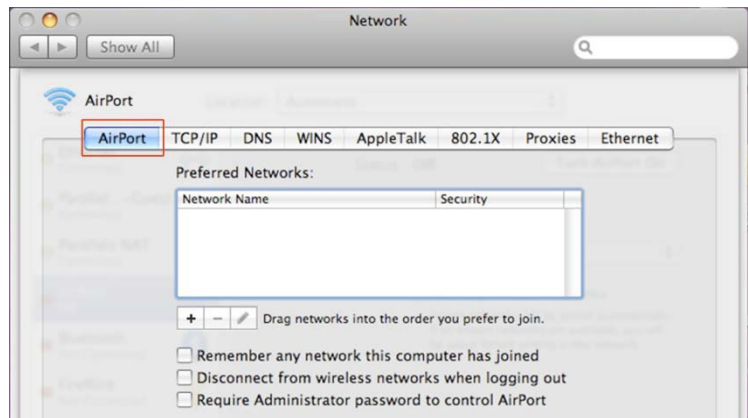
8/26/2009

9. Click **Apply**

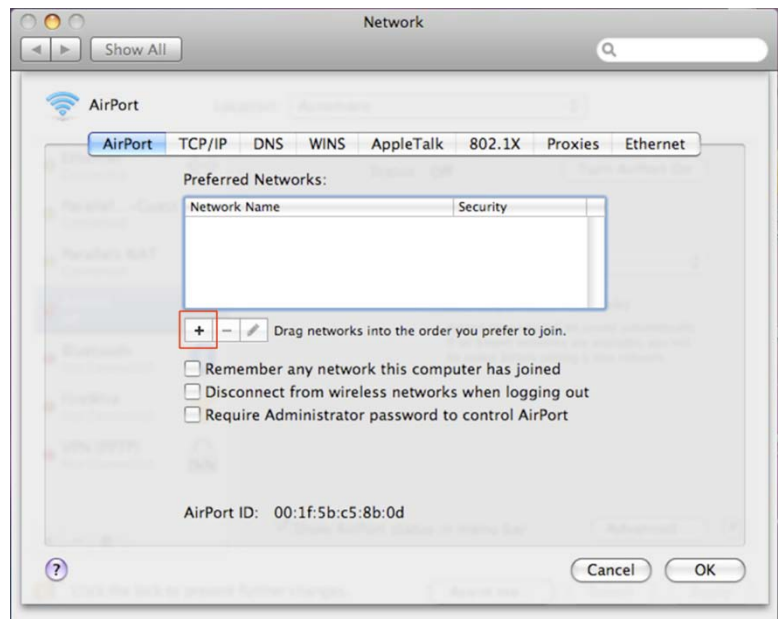


10. Click **Advanced**

11. Click the **AirPort** tab



12. To add a new network
Click **plus sign (+)**



Connecting to the HWS Wireless Network Mac OS 10.5

8/26/2009

13. In **Network Name** enter, **HWSWireless**

14. In the **Security** drop-down menu, select **802.1x WEP**

Note: Password and username should automatically populate in the User Name and Password fields.

15. Select **Remember this Network**

16. Click **Add**

17. In the **Preferred Networks** box, verify that the **HWSWireless** entry is at the top of the network list

HWSWireless should be listed first to ensure that it will be used to enter the campus wireless network

18. Click **OK** and **Apply**

19. Open **Safari** browser and go to a non-HWS web site to confirm connectivity; if the site does not open, try restarting your computer

If you have any trouble with the wireless setup process, please contact the Help Desk in the Library Learning Commons or 315-781-4357 (ext. 4357/HELP on campus) or helpdesk@hws.edu.

The screenshot shows the 'Enter the name of the network.' dialog box. It contains the following fields and options:

- Network Name:** HWSWireless
- Security:** 802.1X WEP
- User Name:** myusername
- Password:** (masked with dots)
- 802.1X:** HWSWireless
- Remember this network
- Buttons: Show Networks, Cancel, Add