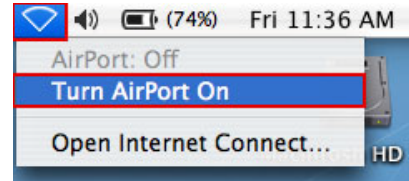


Connecting to HWSWireless Mac OS 10.4

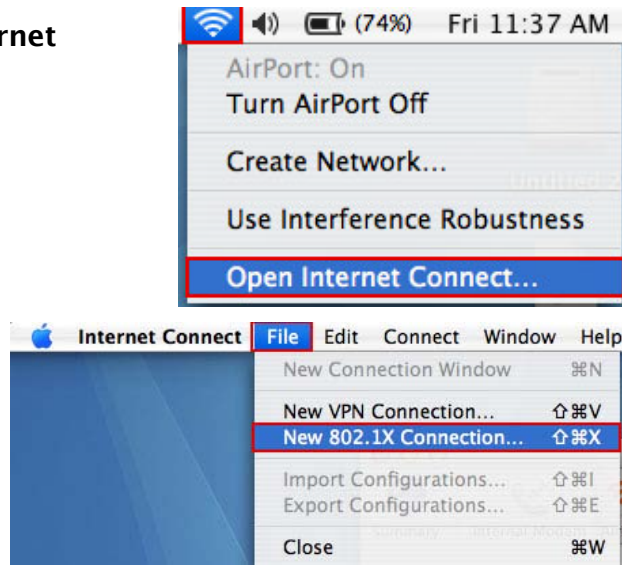
8/26/2009

To configure the wireless connection:

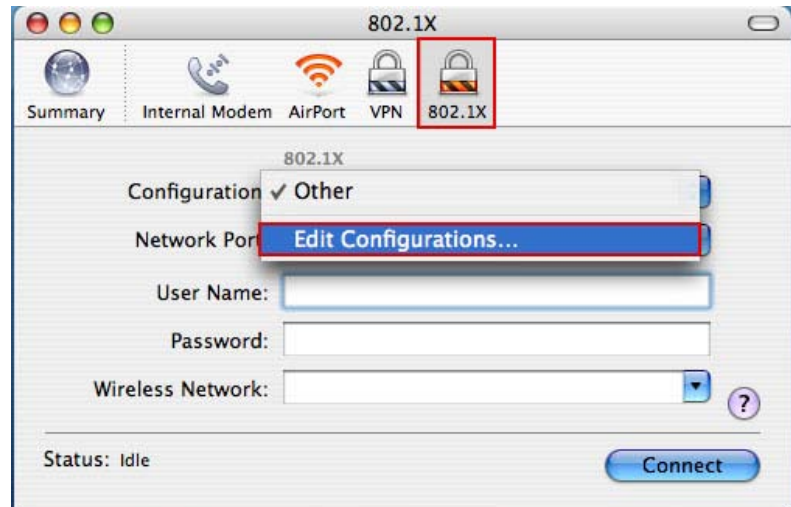
1. From the menu bar, pull down the **AirPort Icon Menu**
2. If your AirPort is off, click **Turn AirPort On**
3. On the AirPort menu click **Open Internet Connect**



4. In Internet Connect, go to **File > New 802.1x Connection**



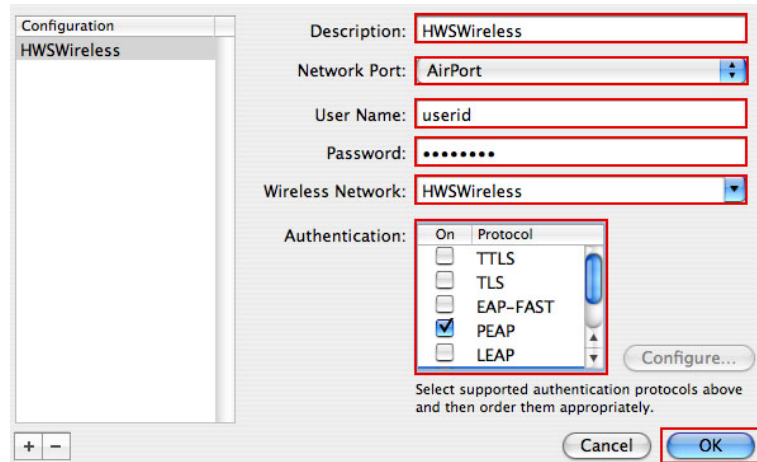
5. In the 802.1X window, in the toolbar, click the **802.1x padlock**
6. Pull down the Configuration menu and select **Edit Configurations**



Connecting to HWSWireless Mac OS 10.4

8/26/2009

7. Set up the 802.1x configuration as follows:
 - Description: **HWSWireless**
 - Network Port: **AirPort**
 - Username and password: **your HWS credentials**
 - Wireless Network: **HWSWireless**

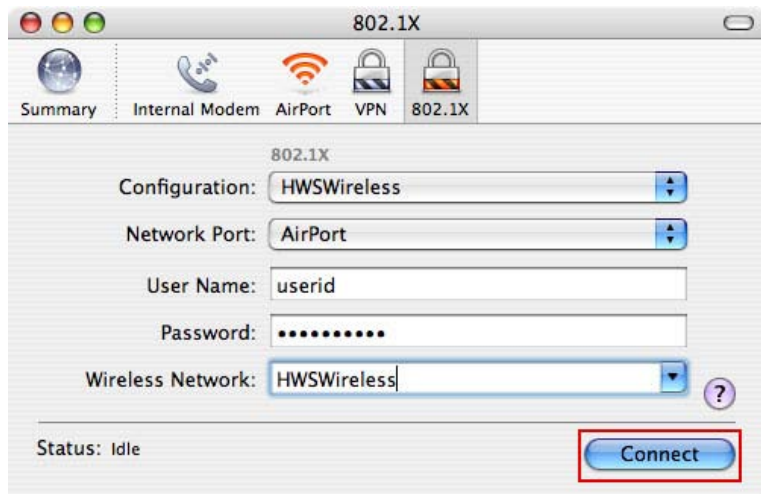


8. Under Authentication, **uncheck** every box **except PEAP**

9. Click **OK**

10. On the 802.1X window, click **Connect**

A Verify Certificate window will appear.



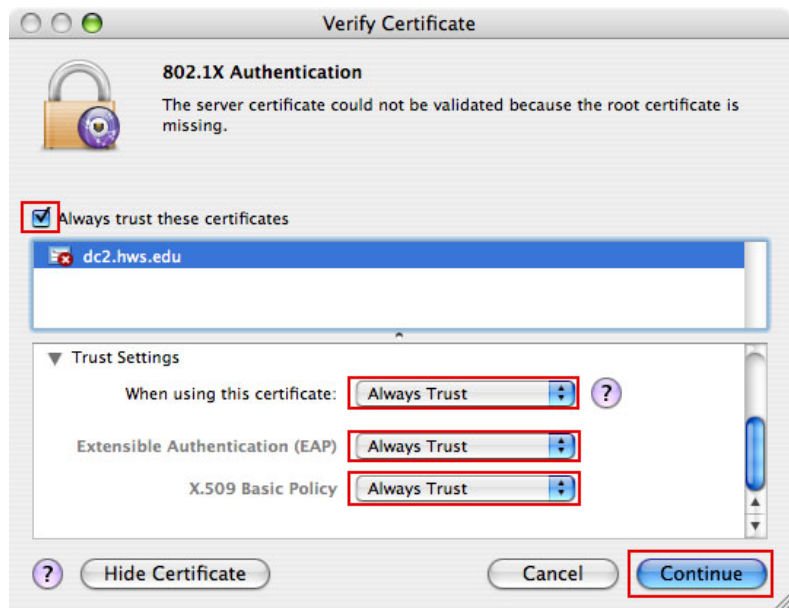
11. On the Verify Certificate window, click **Show Certificate**



Connecting to HWSWireless Mac OS 10.4

8/26/2009

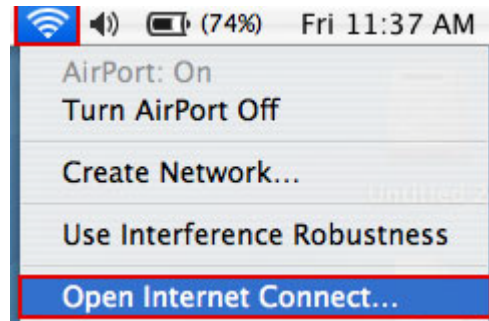
12. On the next Verify Certificate window, check **Always trust these certificates**
13. Expand the **Trust Settings** arrow
14. Set all the Trust Settings to **Always Trust**
15. Click **Continue**
16. Close **Internet Connect**



Connecting to HWSWireless

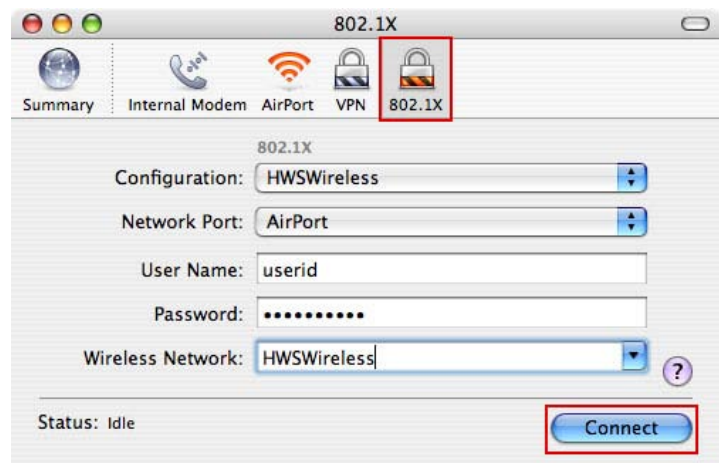
To connect to HWS Wireless:

1. From the tool bar, pull down the **airport** menu
2. Select **Open Internet Connect**
3. Click the **802.1x padlock**
4. Click **Connect**



You should now be able to connect to HWSWireless in any wireless area (if not, try restarting the computer)

If you have any trouble with the wireless setup process, please contact the Help Desk at the



Connecting to HWSWireless

Mac OS 10.4

8/26/2009

Rosensweig Learning Commons or (315) 781-4357 (ext. 4357 on campus)