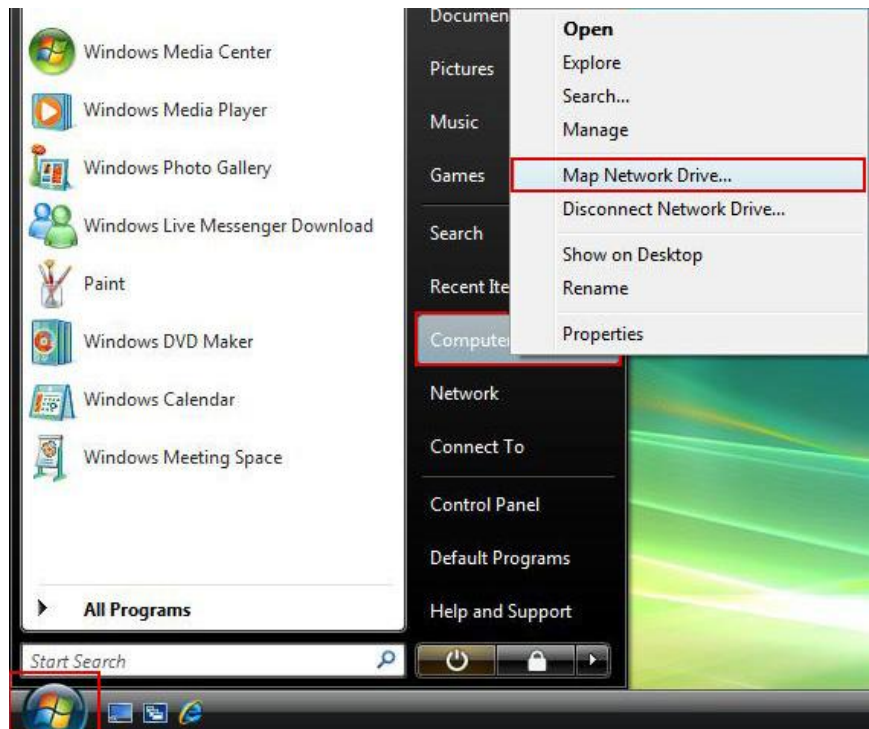


Mapping Network Drives (M, N and I) Windows Vista

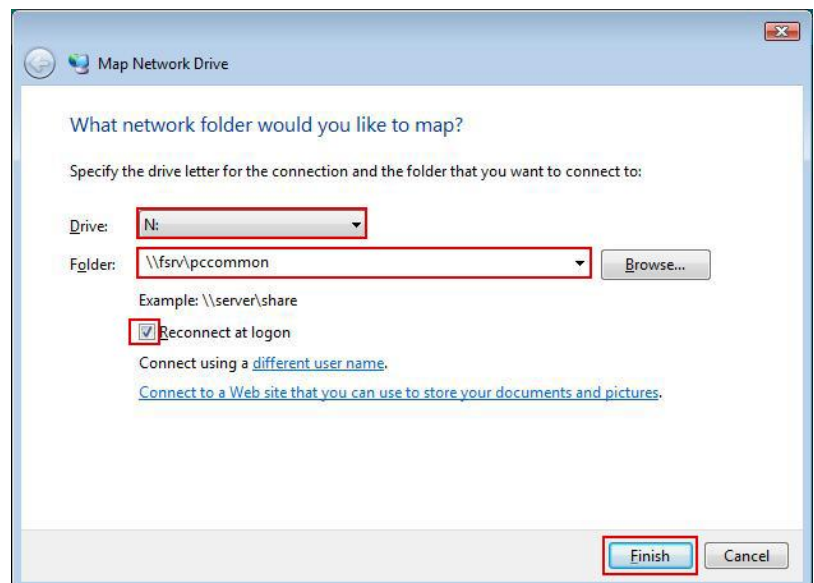
8/17/2007

To map your network drives:

1. Click **Start**
2. Right-click **Computer**
3. Select **Map Network Drive**



4. In the Drive dropdown menu, choose the drive letter:
 - **M:**
 - **N:**
 - **I:**
5. In the Folder field, enter the **folder location**:
 - For M: enter `\\fsrv\yourusername$`
 - For N: enter `\\fsrv\pccommon`
 - For I: enter `\\fsrv\netcommon`



6. Check **Reconnect at logon**
7. Click **Finish**
8. If prompted for a username and password, enter **yourusername@hws.edu** and your **password**
9. Click **OK**

A new window will open showing the folder contents.