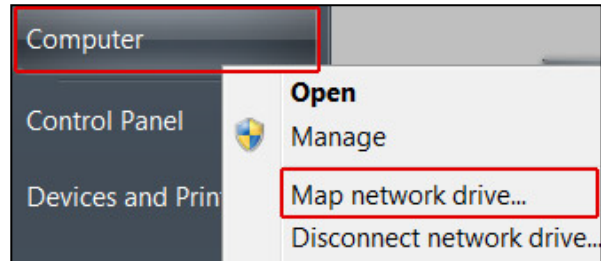


To map your network drives:

1. Click **Start**

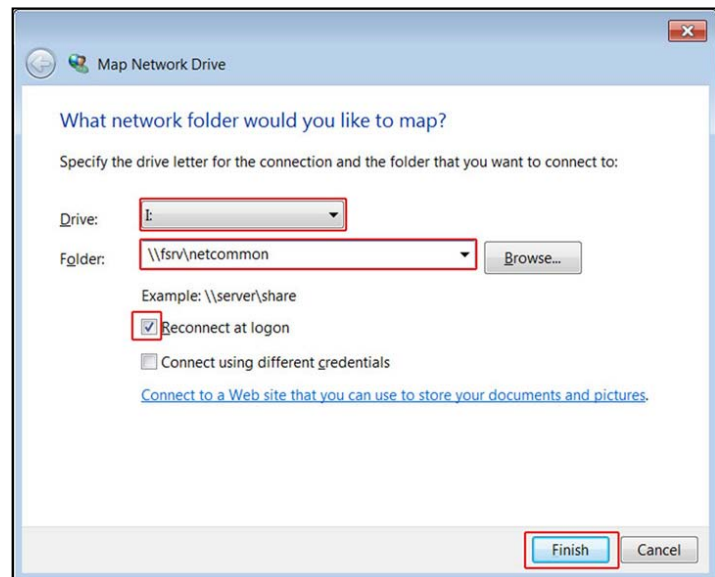


2. Right-click **Computer**
3. Select **Map network drive...**



4. In the Drive dropdown menu, choose the drive letter:
 - **M:**
 - **N:**
 - **I:**

5. In the Folder field, enter the folder location:
 - For M: enter **\\fsrv\yourusername\$**
 - For N: enter **\\fsrv\pccommon**
 - For I: enter **\\fsrv\netcommon**



6. Check **Reconnect at logon**
7. Click **Finish**

8. If prompted for a username and password, enter **yourusername@hws.edu** and your **password**
9. Click **OK**

A new window will open showing the folder contents.